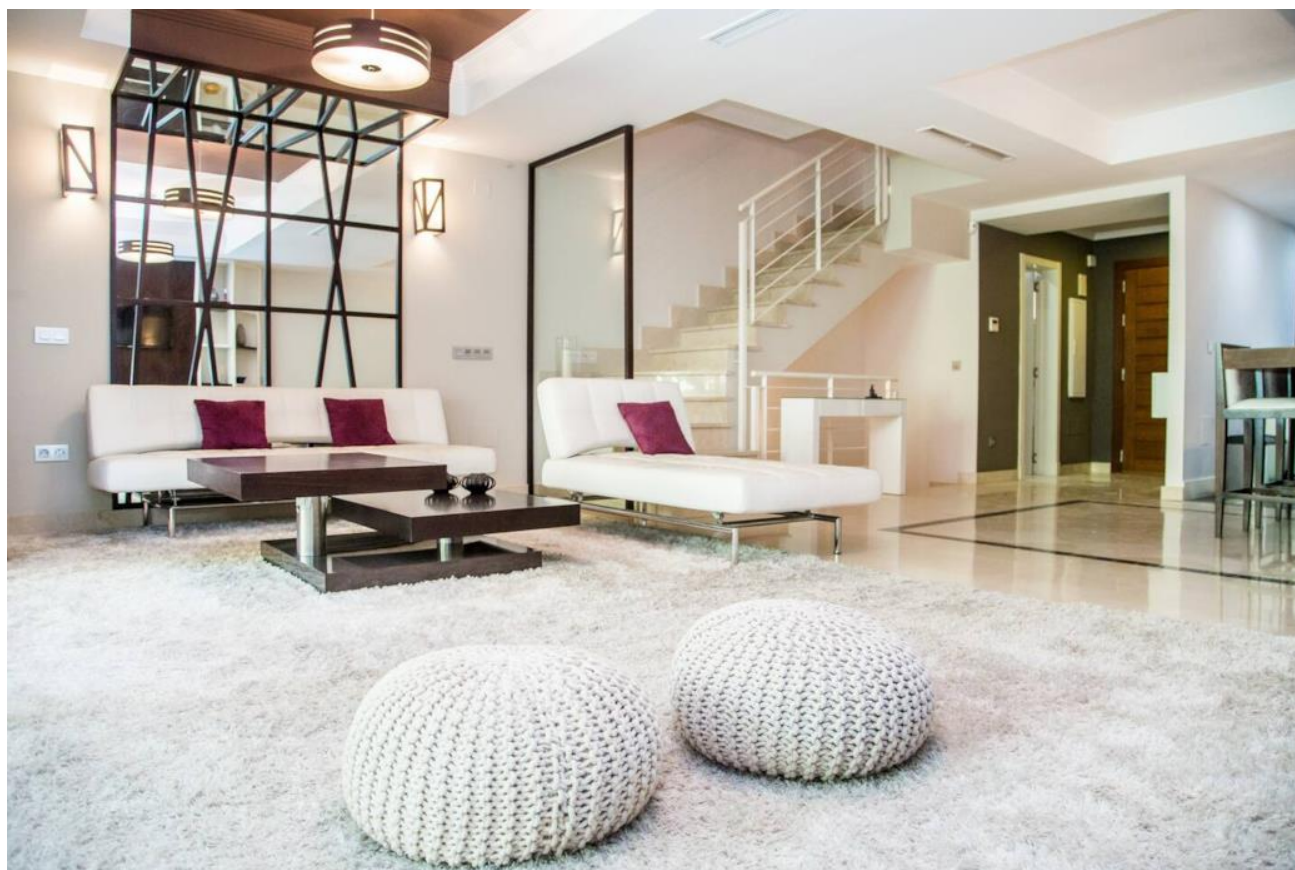


Townhouse El Palmeral, Puerto Banus

Starting Nightly Price Of €475



Luxurious 3 bedroom townhouse located in the fantastic Urbanisation El Palmeral. The property is spread over 3 floors + rooftop terrace, offering guests exceptional levels of comfort, style and space. The community is maintained to a very high standard, and presents guests with mature gardens and large communal swimming pool.

The space:

Through the front door, guests will find themselves in the open plan living room and kitchen, with attached guest bathroom. The kitchen has all of the appliances and utensils expected of a luxury property (microwave, oven, fridge/freezer, nespresso coffee machine, dishwasher, washing machine and tumble dryer). The dining table links the kitchen with the living room, comfortably seating up to 8. The spacious living room is complete with sofa bed and smart TV, and opens out to the terrace and garden, perfect for al-fresco dining and BBQs.

Downstairs guests will find the tastefully furnished tv room, which is the perfect retreat when needing a few hours from the Summer heat.

On the first floor guest will find the 3 bedrooms. The master bedroom offers a queen sized bed, ensuite with twin sinks and rainfall shower, and walk-in wardrobe. The second bedroom has a large double sized bed, and shares a large bathroom (with

Bedrooms: 3

Bathrooms: 2

Property Type: Townhouse

Call +44 77 11 393 081 or +44 77 11 393 082 to view this property, or visit <https://vitavip.es/properties> for more details

Townhouse El Palmeral, Puerto Banus

Starting Nightly Price Of €475

shower and bath) with the third bedroom, which offers 2 single beds in a bohemian styled room.

The rooftop terrace is West facing, meaning the space will bask in sunlight for the majority of the day. The terrace offers a great deal of room and a number of spaces to sit. For those wanting to escape the Sun, you have a covered thatched roof bed , and for those wanting to cool off, there is a rooftop shower.

The property has A/C and WiFi throughout, and the private garage can fit up to 2 cars.

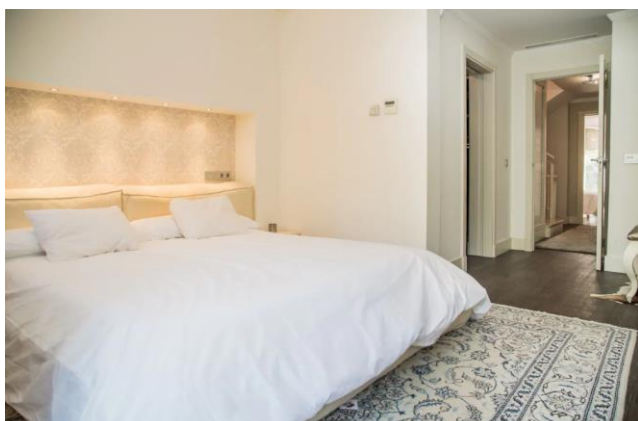
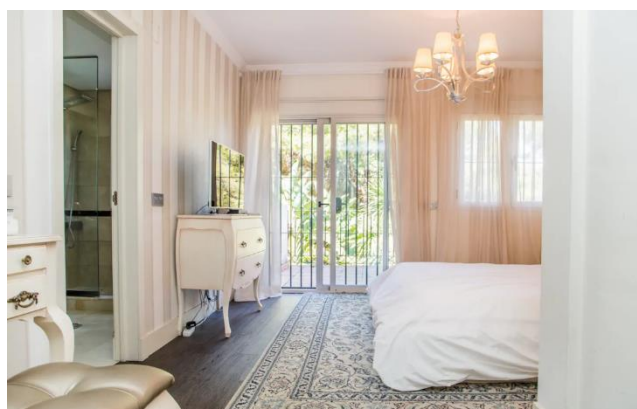
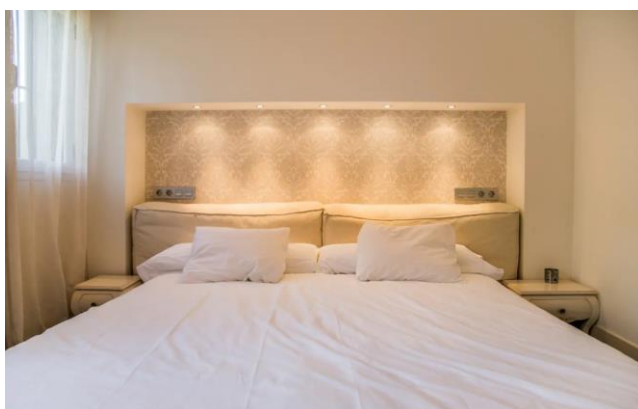
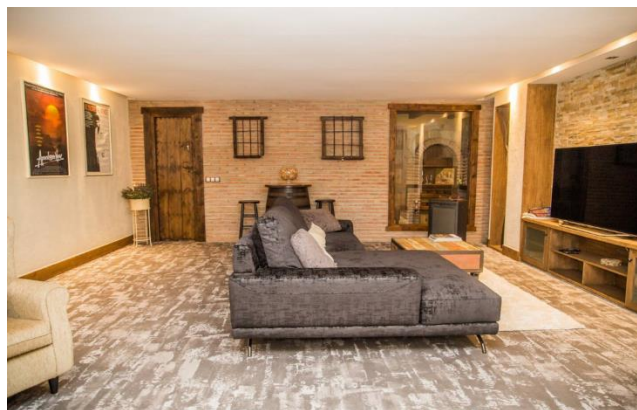
The property is ideally located in the heart of Nueva Andalucia, within walking distance (less than 5 minutes) of a supermarket (Supercor), 2 tennis clubs, a number of excellent bars and restaurants (including MOSH fun kitchen), and is less than a 5 minute taxi ride from the world famous Puerto Banús and the beach!



Call +44 77 11 393 081 or +44 77 11 393 082 to view this property, or visit <https://vitavip.es/properties> for more details

Townhouse El Palmeral, Puerto Banus

Starting Nightly Price Of €475



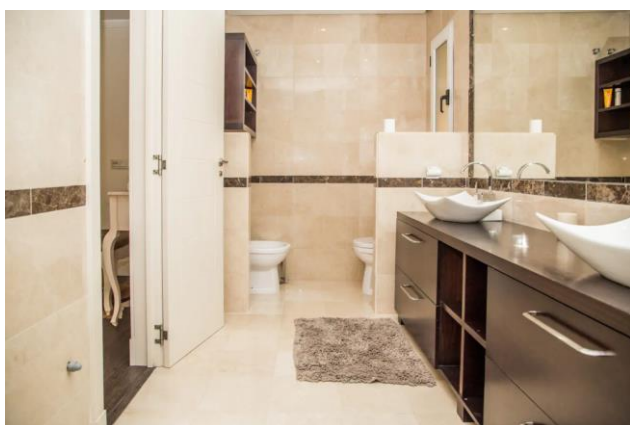
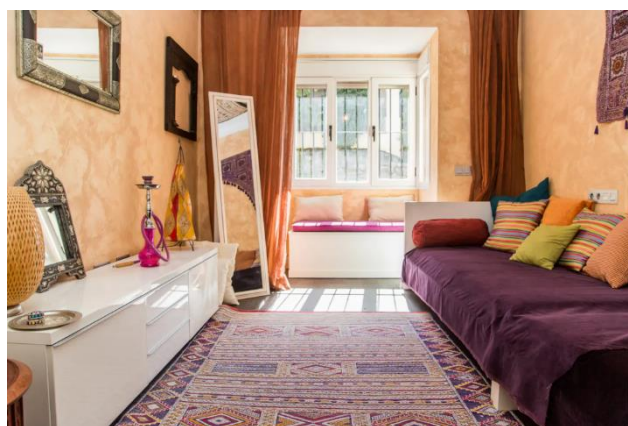
Call +44 77 11 393 081 or +44 77 11 393 082 to view this property, or visit <https://vitavip.es/properties> for more details

27 Northways Parade, College Crescent, London, NW3 5DN | T: 020 7759 2199 | E: info@vitavip.es
efforts to ensure this information is accurate, but we can't guarantee it.

We make all

Townhouse El Palmeral, Puerto Banus

Starting Nightly Price Of €475



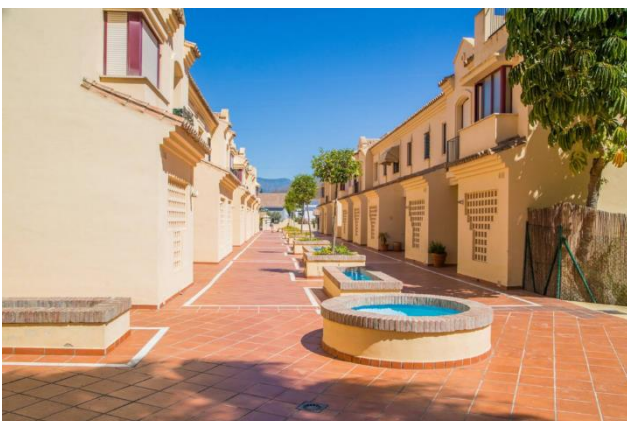
Call +44 77 11 393 081 or +44 77 11 393 082 to view this property, or visit <https://vitavip.es/properties> for more details

27 Northways Parade, College Crescent, London, NW3 5DN | T: 020 7759 2199 | E: info@vitavip.es
efforts to ensure this information is accurate, but we can't guarantee it.

We make all

Townhouse El Palmeral, Puerto Banus

Starting Nightly Price Of €475



Call +44 77 11 393 081 or +44 77 11 393 082 to view this property, or visit <https://vitavip.es/properties> for more details

27 Northways Parade, College Crescent, London, NW3 5DN | T: 020 7759 2199 | E: info@vitavip.es
efforts to ensure this information is accurate, but we can't guarantee it.

We make all

Townhouse El Palmeral, Puerto Banus

Starting Nightly Price Of €475



Call +44 77 11 393 081 or +44 77 11 393 082 to view this property, or visit <https://vitavip.es/properties> for more details

27 Northways Parade, College Crescent, London, NW3 5DN | T: 020 7759 2199 | E: info@vitavip.es
efforts to ensure this information is accurate, but we can't guarantee it.

We make all

Townhouse El Palmeral, Puerto Banus

Starting Nightly Price Of €475



Call +44 77 11 393 081 or +44 77 11 393 082 to view this property, or visit <https://vitavip.es/properties> for more details

27 Northways Parade, College Crescent, London, NW3 5DN | T: 020 7759 2199 | E: info@vitavip.es
efforts to ensure this information is accurate, but we can't guarantee it.

We make all

Townhouse El Palmeral, Puerto Banus

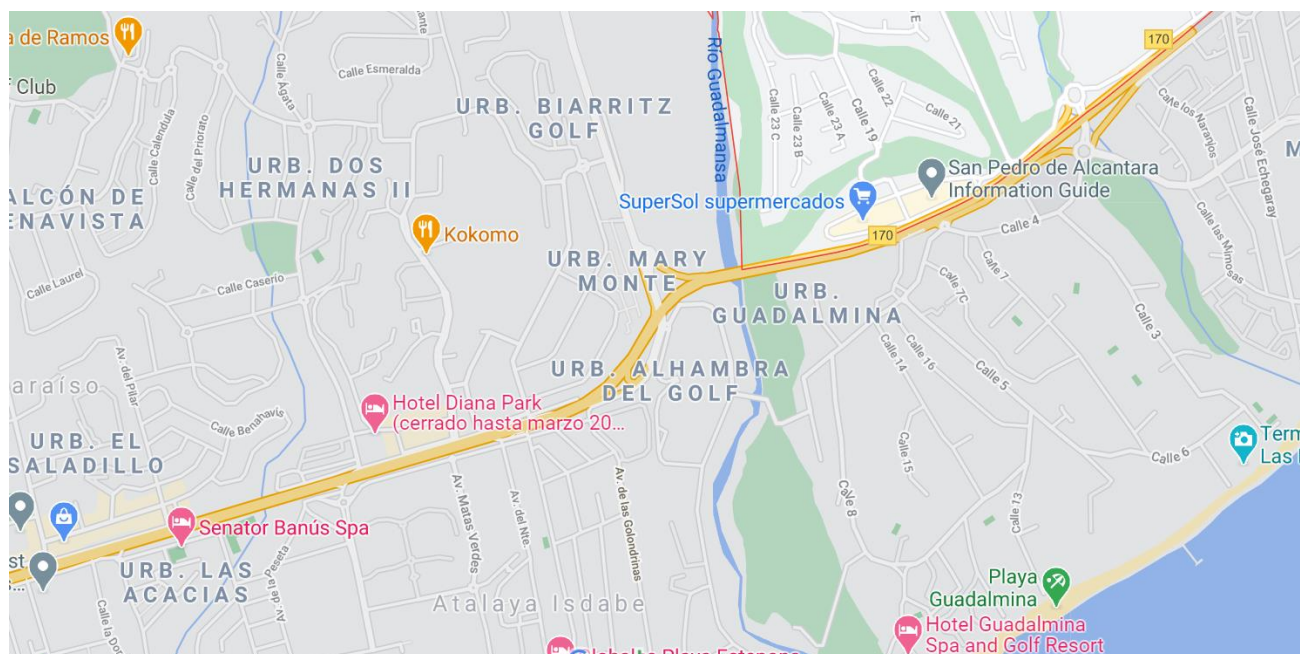
Starting Nightly Price Of €475



Floor Plan:



Map:



Call +44 77 11 393 081 or +44 77 11 393 082 to view this property, or visit <https://vitavip.es/properties> for more details

27 Northways Parade, College Crescent, London, NW3 5DN | T: 020 7759 2199 | E: info@vitavip.es
efforts to ensure this information is accurate, but we can't guarantee it.

We make all