

Apt. Señorío de Aloha, Puerto Banus

Starting Nightly Price Of €80



Exceptional 2 bedroom apartment in the fantastic Señorío de Aloha urbanisation. The apartment boasts fantastic sea and mountain views, is just 1km for the world famous Puerto Banús (2 minutes by car and 15 minutes walking), is close to numerous restaurants, bars, and supermarkets, and the urbanization offers secure underground parking, 3 swimming pools (open during the summer season) and a padel tennis court.

The property has AC (hot and cold) and strong WiFi throughout! Through the front door guests will find the kitchen on the right, the corridor to the bedrooms in front, and the living room on the left.

The kitchen is fully equipped and has everything guests may need while cooking at home. The living room is well furnished and decorated to a high standard. There is a dining area, large L-shaped sofa facing a TV and fireplace, and a large window that leads to the spacious southeast facing terrace outside. The apartment's terrace is perhaps its greatest selling point. It offers beautiful views over the Mediterranean and also the iconic La Concha mountain that looks over Marbella (the crane visible in the pictures has since been removed). The terrace has chillout seating and also a dining area.

Back inside, the master bedroom offers a double bed with ensuite bathroom (bath/shower). The bedroom also has its own

Bedrooms: 2

Bathrooms: 2

Property Type: Apartment

Call +44 77 11 393 081 or +44 77 11 393 082 to view this property, or visit <https://vitavip.es/properties> for more details

Apt. Señorío de Aloha, Puerto Banus

Starting Nightly Price Of €80

private terrace with partial mountain views. The second bedroom is made up of 2 single beds, which also have access to a private terrace that has sea and mountain views. This bedroom has access to the guest bathroom that has a bath/shower.

The community has 3 pristine swimming pools and well maintained gardens that surround the pool areas. The communal padel tennis court is also free of charge to guests staying in the complex.

Señorio de Aloha is close to everything, just 5 minutes walk to the closest supermarket and shopping centre, and a 15-20 minute walk to the world famous Puerto Banús, with all its nightlife, restaurants and shopping!



Call +44 77 11 393 081 or +44 77 11 393 082 to view this property, or visit <https://vitavip.es/properties> for more details

Apt. Señorío de Aloha, Puerto Banus

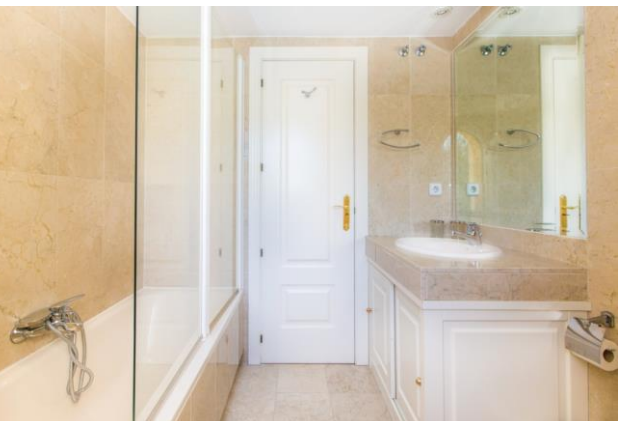
Starting Nightly Price Of €80



Call +44 77 11 393 081 or +44 77 11 393 082 to view this property, or visit <https://vitavip.es/properties> for more details

Apt. Señorío de Aloha, Puerto Banus

Starting Nightly Price Of €80



Call +44 77 11 393 081 or +44 77 11 393 082 to view this property, or visit <https://vitavip.es/properties> for more details

Apt. Señorío de Aloha, Puerto Banus

Starting Nightly Price Of €80



Call +44 77 11 393 081 or +44 77 11 393 082 to view this property, or visit <https://vitavip.es/properties> for more details

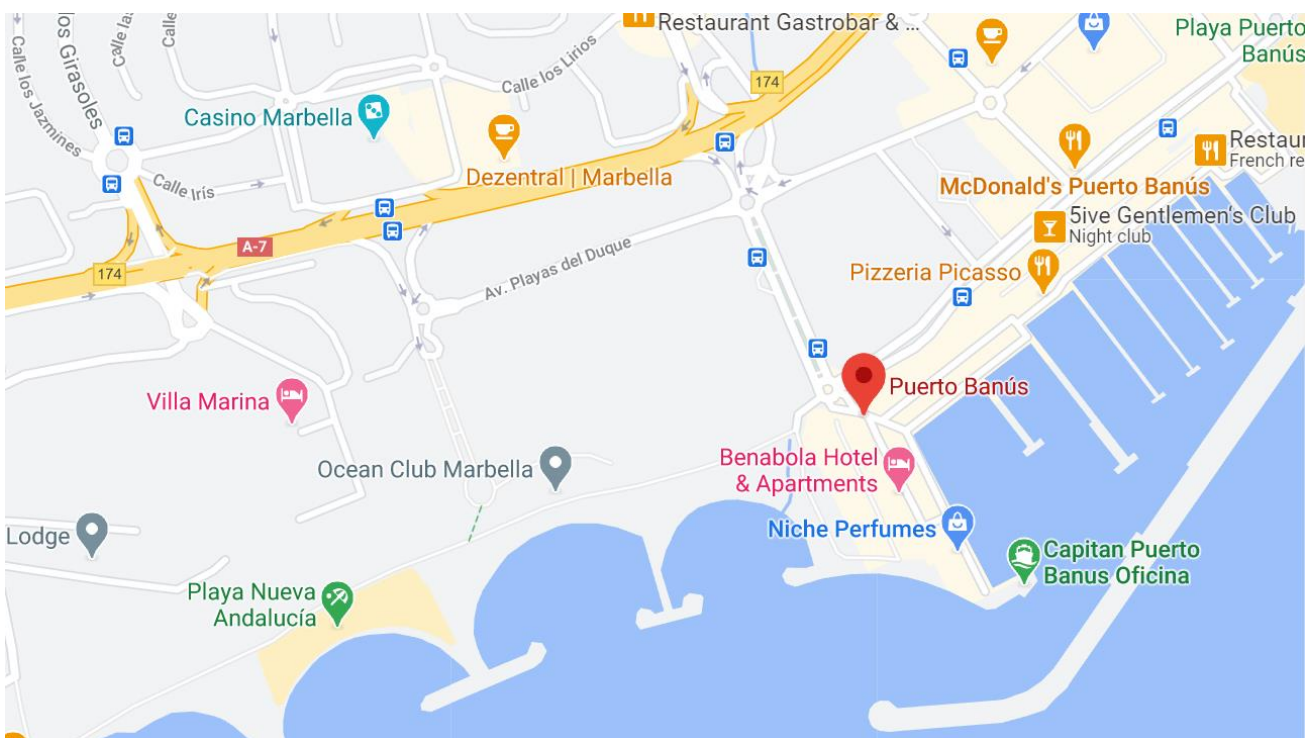
Apt. Señorío de Aloha, Puerto Banus

Starting Nightly Price Of €80

Floor Plan:



Map:



Call +44 77 11 393 081 or +44 77 11 393 082 to view this property, or visit <https://vitavip.es/properties> for more details